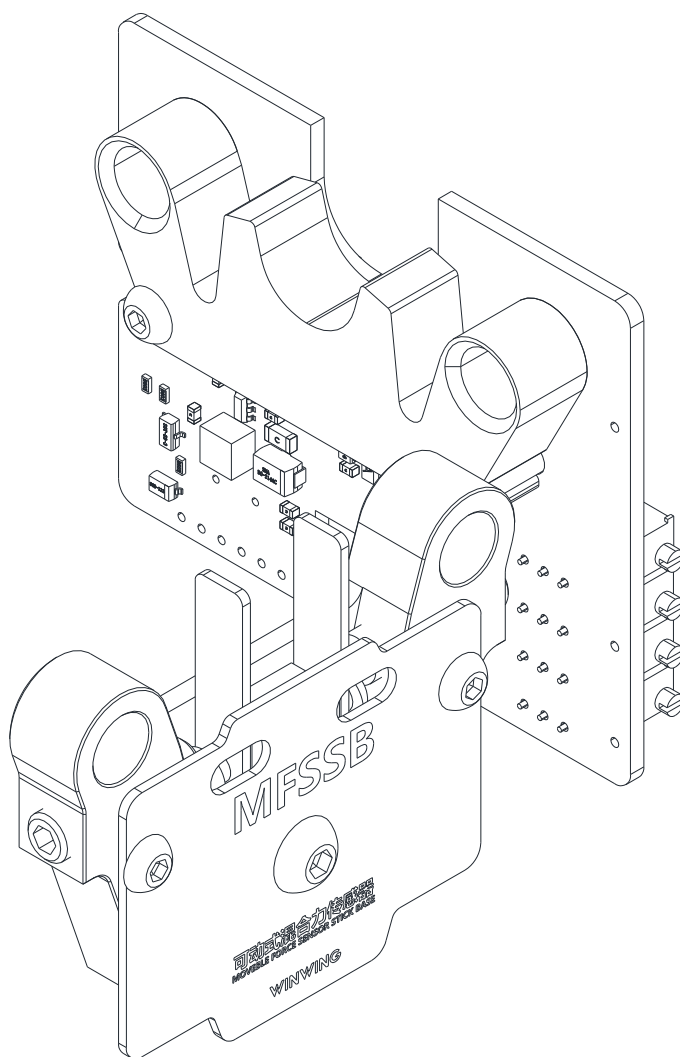
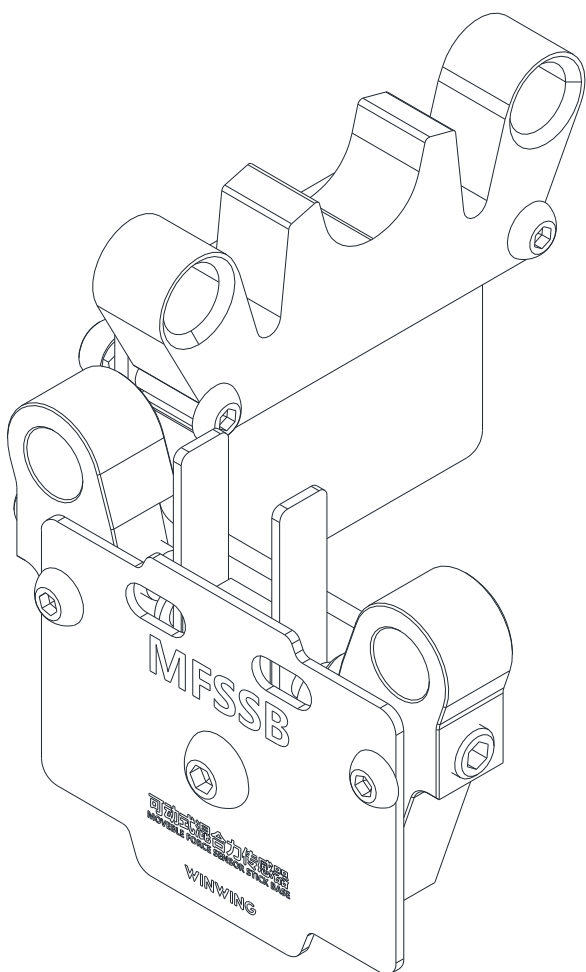


EX2-J2-2

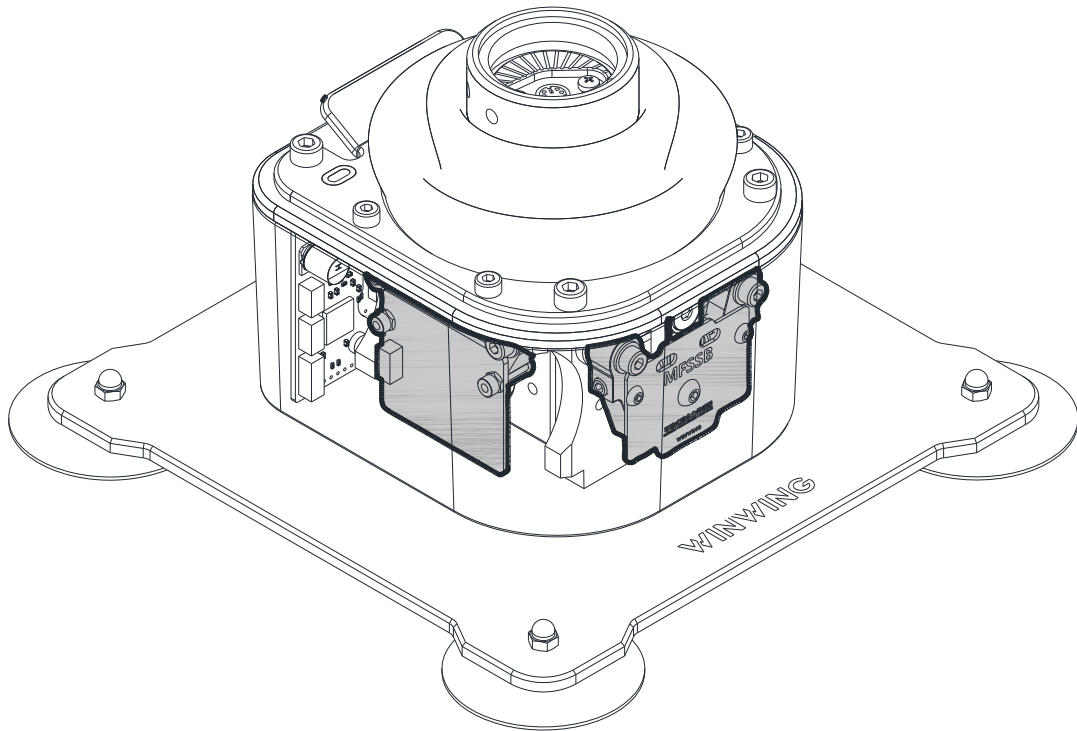
User Manual V1.0 2023.02



Contents:

Contents in the box.....	1
1 Reference Data.....	1
1.1 Mechanical parameter.....	1
1.2 Electric parameter.....	1
2 Install Limit Reeds.....	3
2.1 Disassembly.....	3
2.2 Assembly.....	4

Contents in the box



This product has been pre-installed to J2-2-BASE

1 Reference Data

1.1 Mechanical parameter

1. The mechanical stroke of the movable area is ± 1 degree;
2. The force in the movable area can be adjusted separately (Please refer to 2 Install limit Reeds for details);
3. The maximum working load under the default assembly is 6kg.

1.2 Electric parameter

1. Force+displacement mode

The output is determined by both force and position sensor. You can set the mixing ratio of

the rod in the physically movable area to the overall stroke. The larger the value, the more obvious the influence of the movable stroke on the final output, which is suitable for easy and accurate operation.

2. Force only mode

The movable area does not efficient output, and exists as a mechanical dead zone. The maximum available force ratio can be customized for force induction.

3. Fully realistic mode

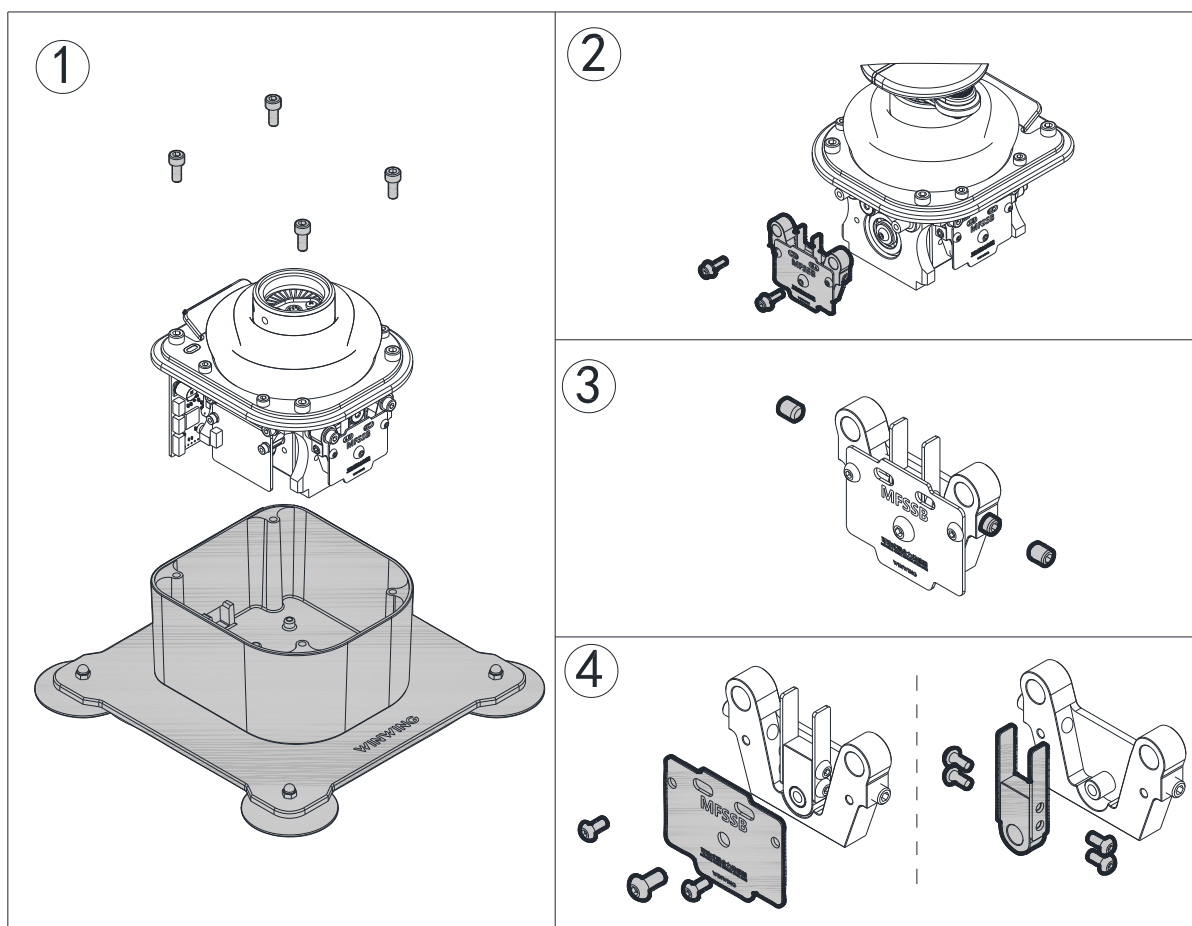
In this mode, the genuine 16 fight jet operation is loyally duplicated, a special gift for professional aviators. (not recommend ordinary players to use this mode) The movable displacement will comply the real joystick movement, at 100%, moving the joystick to the end, the actual control reached 100%.

Note: two or three limit reeds might be installed as the aviator' s preference to strength.

2 Install Limit Reeds

2.1 Disassembly

- ① Remove the four M5 screws, then take out the main part;
- ② Remove the screws and gaskets, and remove the main part;
- ③ Remove the outer two lock screws and unscrew the inner two lock screws;
- ④ Remove the screws as shown and take out the decorative plate and assembly, remove four screws of the main part, then remove the limit reeds;



2.2 Assembly

- ① Install the limit reeds and tighten the four screws, install the limit reeds and decorative plate on the assembly and tighten the lock screws on both sides;

Note: A maximum of three limit reeds are installed on one side.

- ② Install the assembly to the base and tighten the screws and gaskets;

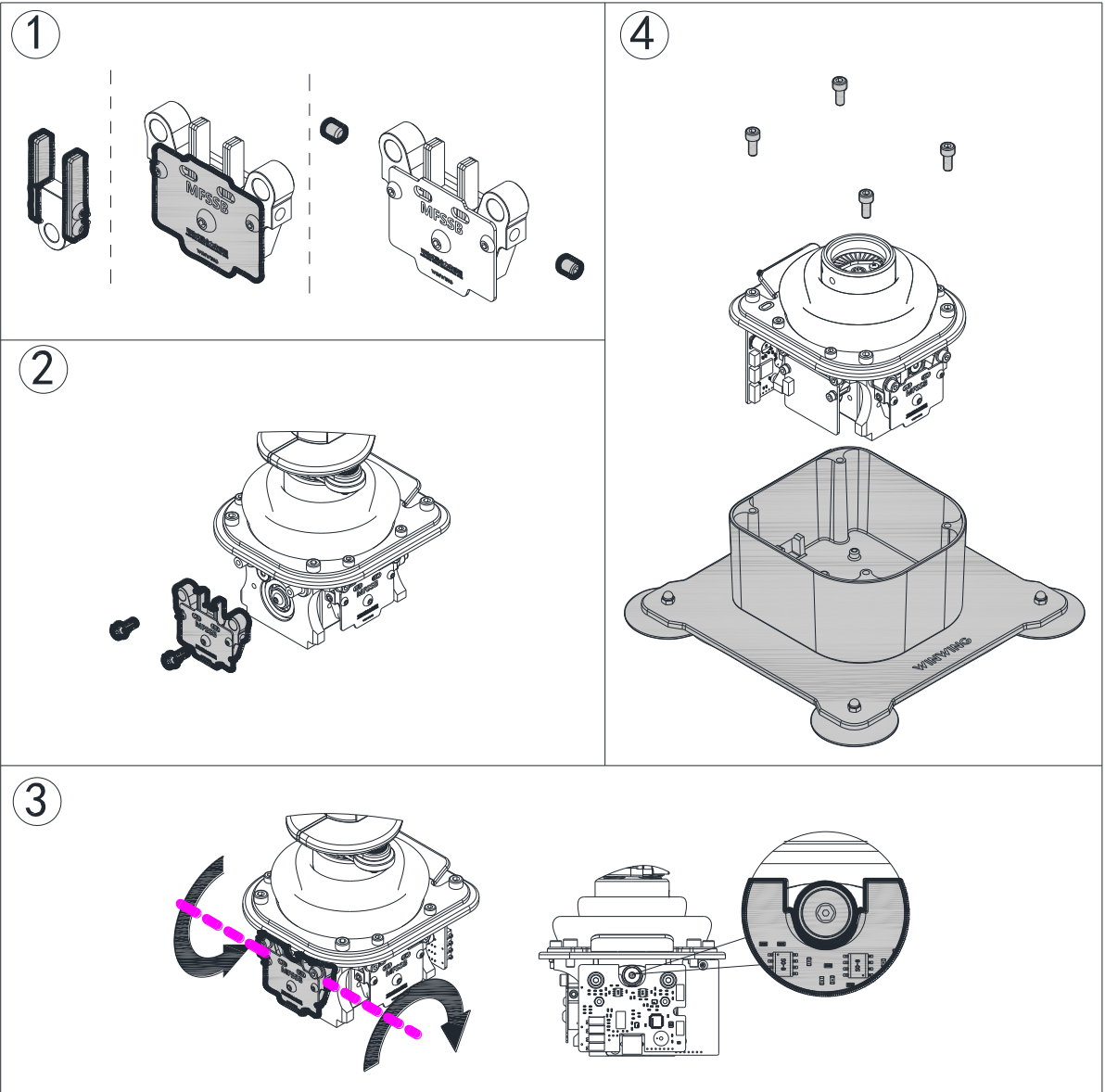
Note: Gasket should be distinguished from front and back, which can be inclined to install the joystick to make the bearing side open the limit reeds and press into the assembly;

- ③ Adjust the lock screw on both sides so that the travel of the movable area is consistent.

After confirmation, screw the lock screws on both sides to prevent loose;

Note: Visually examine the bearing spacing on the PCB side and pull the joystick to judge the degree of adjustment, if you install three limit reeds, the anti-loose screws cannot be installed.

- ④ Close the assembly and shell, and clockwise tighten the four M5 screws under the removal.



*** This is the final version of the manual,all update will be made online.**

成都翼胜科技有限责任公司

WWW.WINWING.CN

INFO@WINWING.CN

High-tech International Enterprise Zone No.19 Building,Changshengqiao Road

1111#, Pidu District, Chengdu,China 610000