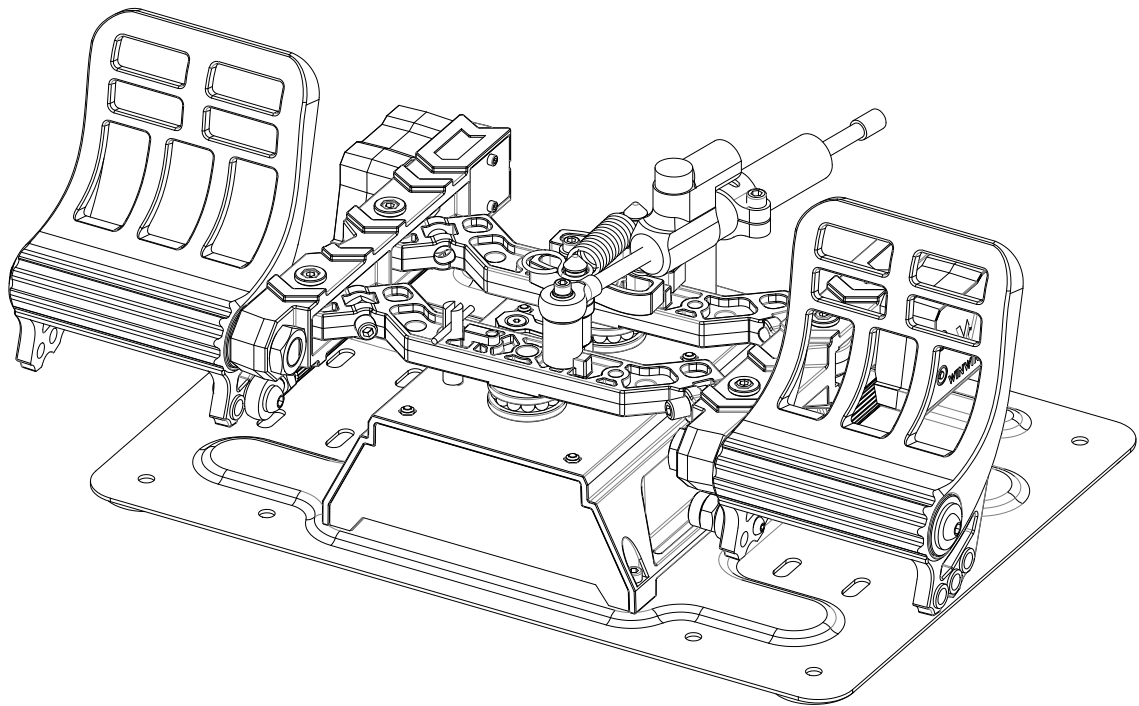


R1 （Metal Base Version） +DAMPER1

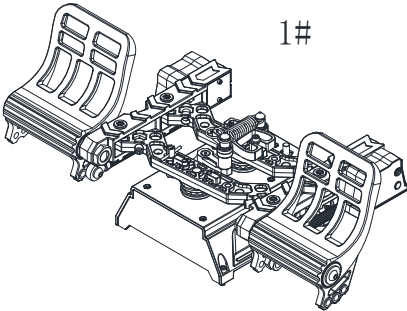
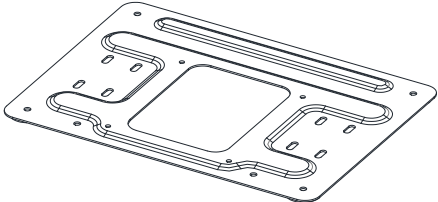
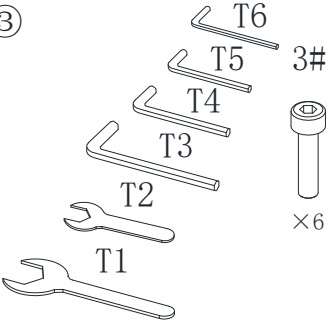
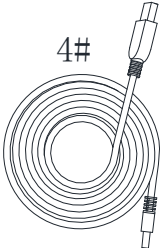
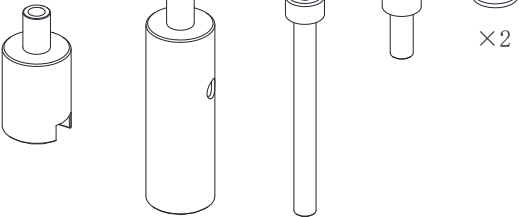
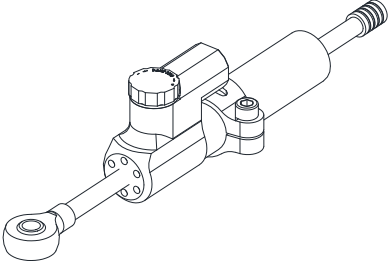
User Manual V1.2 2024.07



Catalog

Packing List	1
1. Parameters	3
1.1. Performance Parameters	3
1.2. Dimensions	3
1.3. Base Plate Installation Dimensions	3
2. Components Assembly and Disassembly	4
2.1. Spring Dismounting	4
2.2. Base Plate (2#) Mounting	6
2.3. Damper1 (5#-10#) Mounting	7
3. Functions	8
3.1. Buttons and Functions	8
3.2. Adjustment Methods	8
3.2.1. Damping Adjustment	11
3.2.2. Pedal Adjustment	12

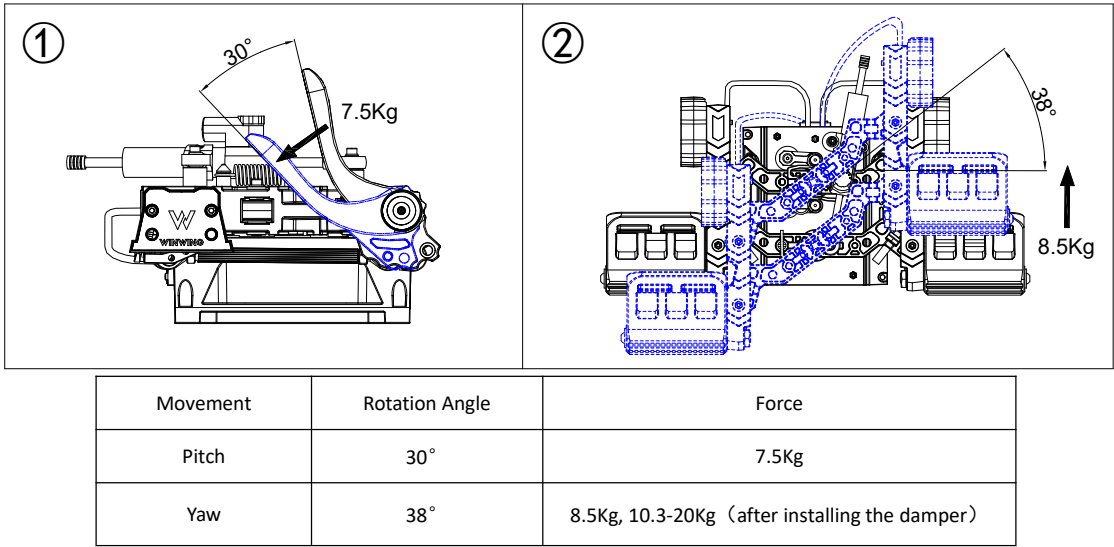
Packing List

<p>①</p> <p>1#</p> 	<p>②</p> <p>2#</p> 
<p>③</p> <p>T6 T5 T4 T3 T2 T1</p> <p>3#</p> <p>×6</p> 	<p>④</p> <p>4#</p> 
<p>⑤</p> <p>5#</p> <p>6#</p> <p>7#</p> <p>8#</p> <p>9#</p> <p>×2</p> 	<p>10#</p> 

- | | |
|--------------------------------------------------------------------|---|
| 1. R1-Pedal Assembly | 1 |
| 2. Base Plate Assembly | 1 |
| 3. Accessory Kit | 1 |
| 4. USB2.0-AM to Straight BM | 1 |
| 5. Damper1(Optional: consumables are not covered by the warranty.) | |
| 1 | |

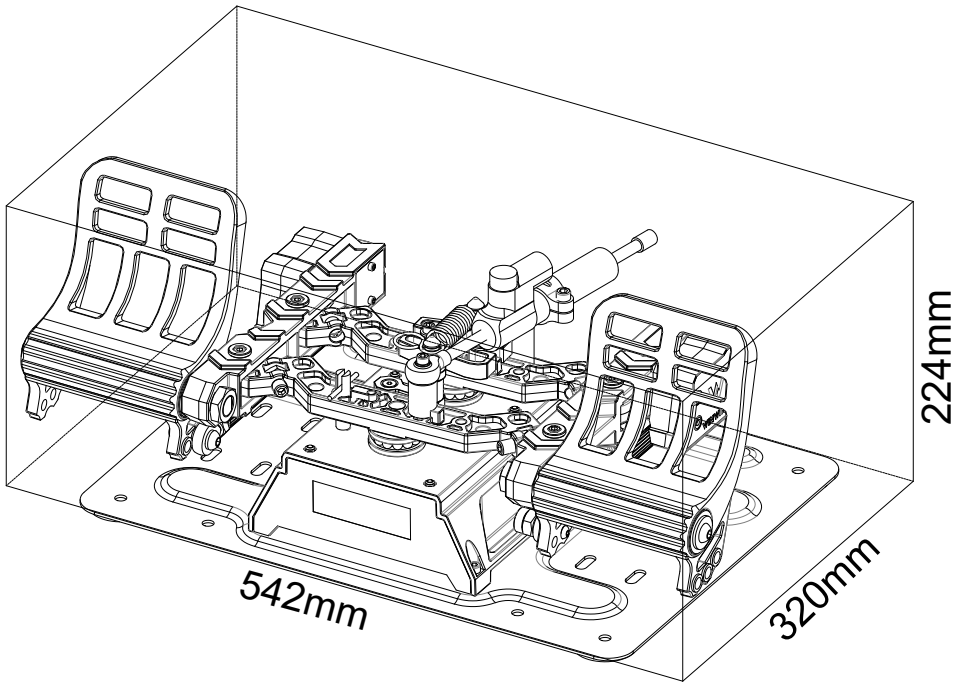
1. Parameters

1.1. Performance Parameters



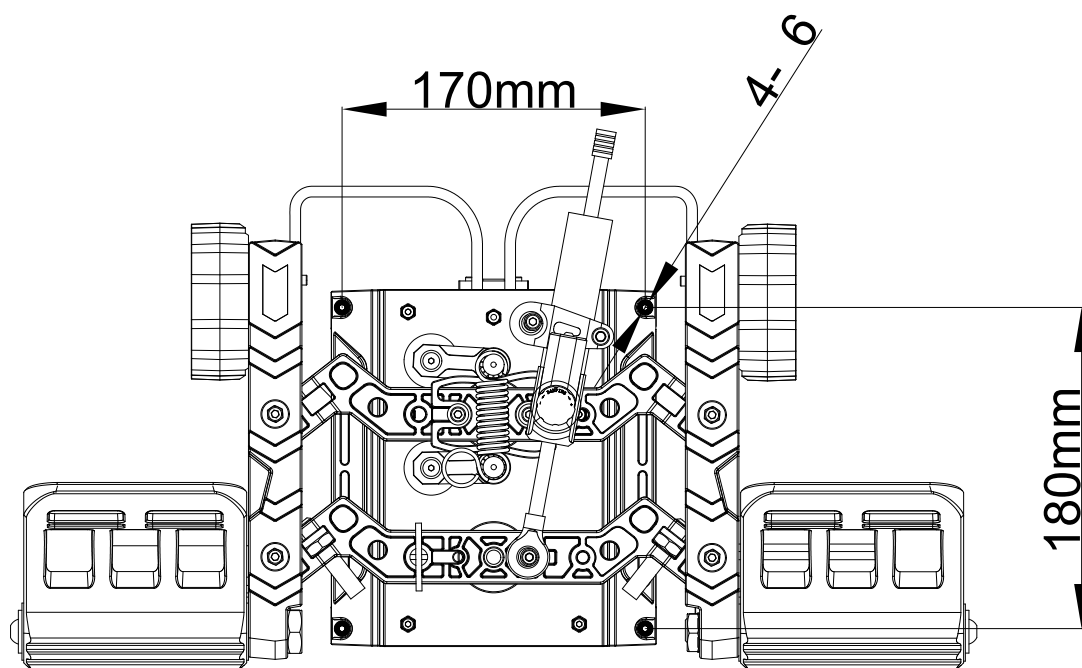
1.2. Dimensions

LxWxH: 542mm*320mm*224mm
Weight: 8.4Kg=18.52lb



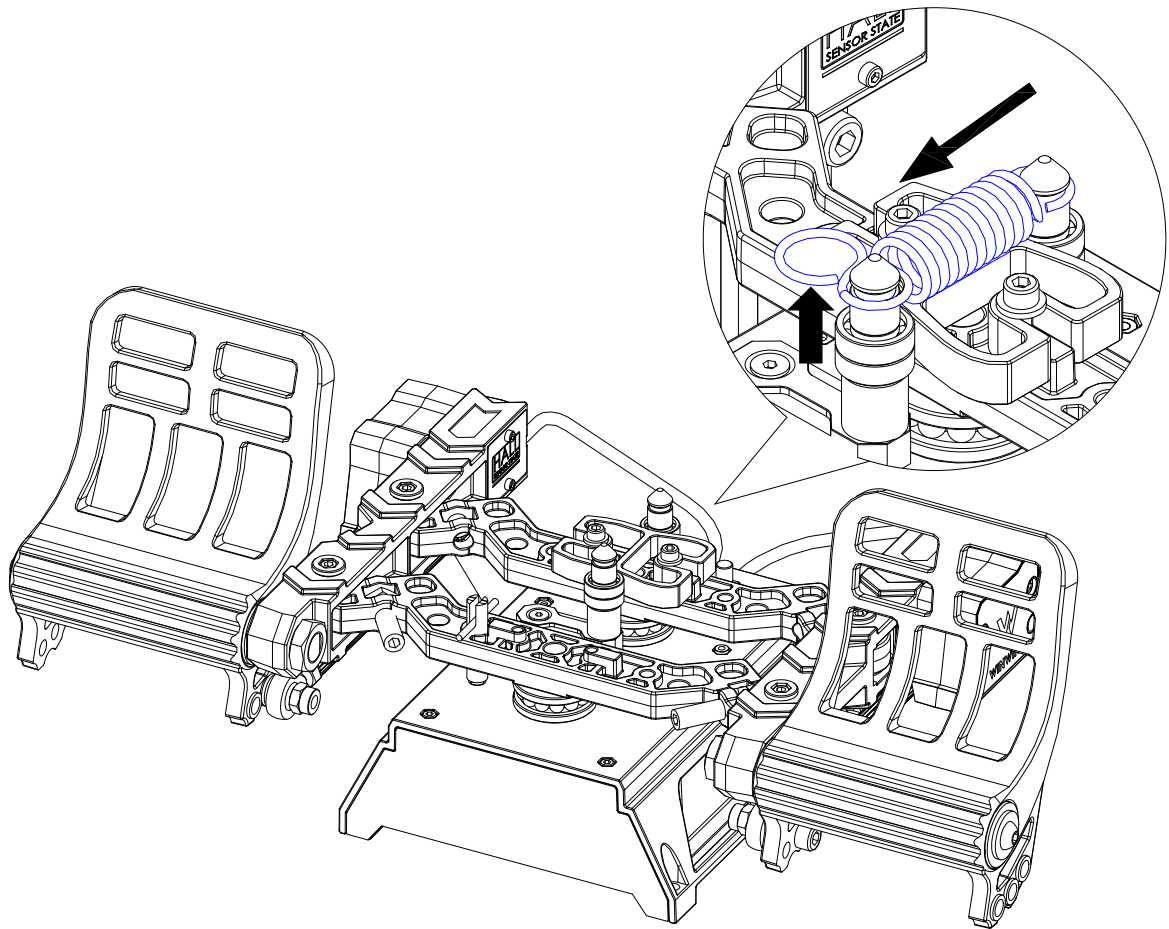
1.3. Base Plate Installation Dimensions

The mounting hole spacing for the base plate is 180mm x 170mm, with a hole diameter of 6mm.



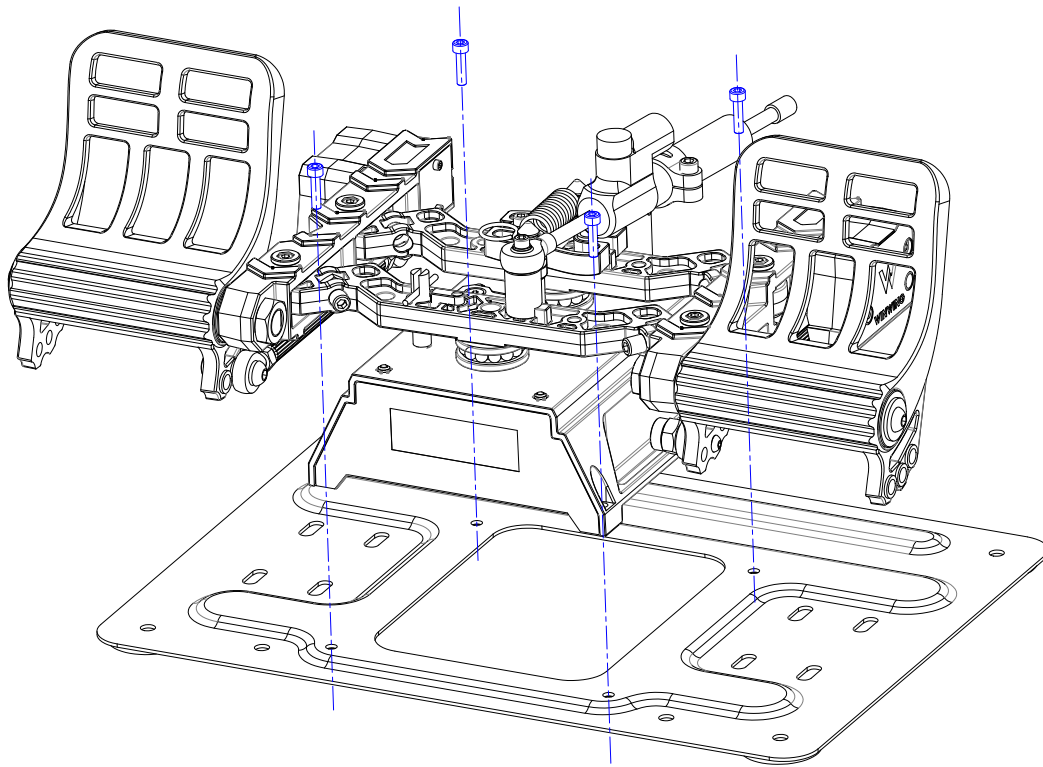
2. Components Assembly and Disassembly

2.1. Spring Dismounting

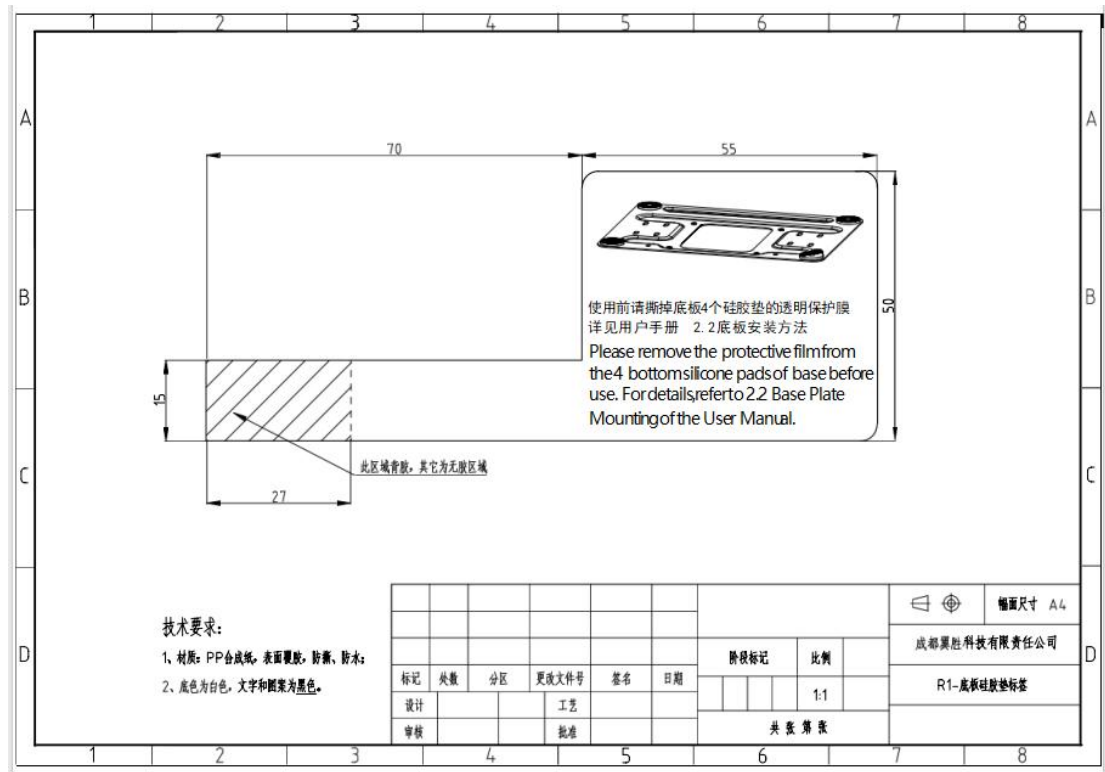


- ① Pull the spring ring upwards and remove it.
- ② To install the spring, pull the spring ring and place it onto the cone, then press downwards with force.

2.2. Base Plate(2#) Mounting

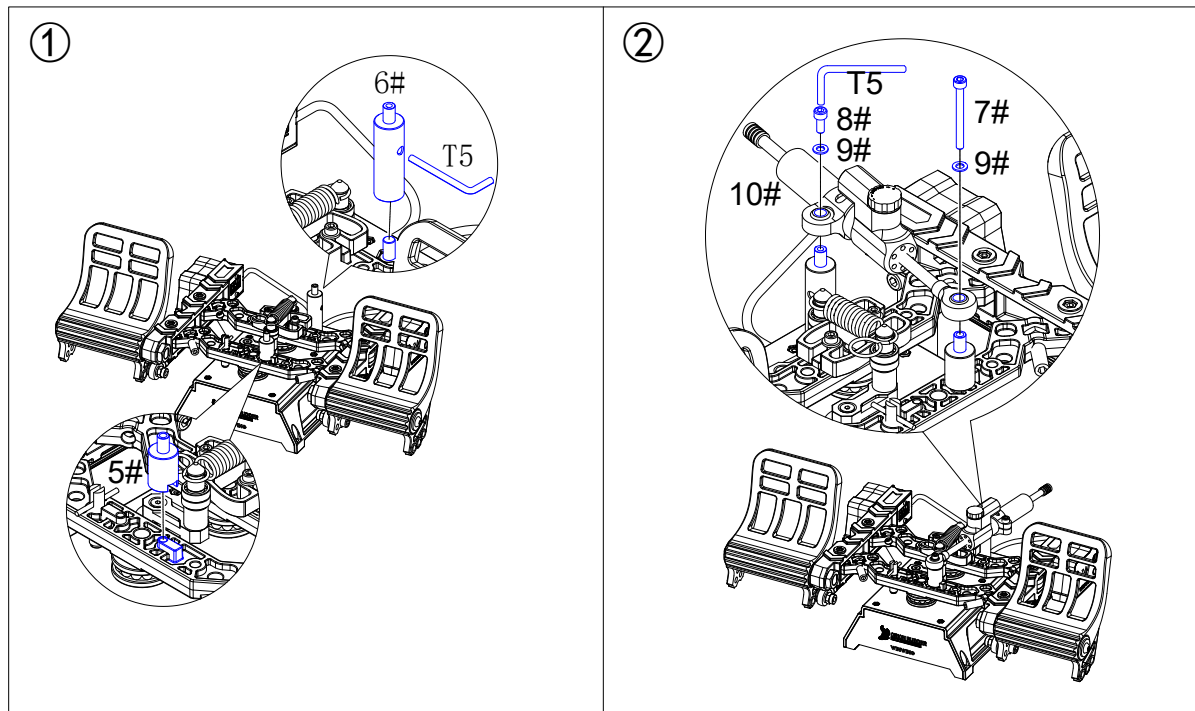


- ① Lock 4 M5*20 (3#) screws onto the base plate through the 4 holes.



- ②

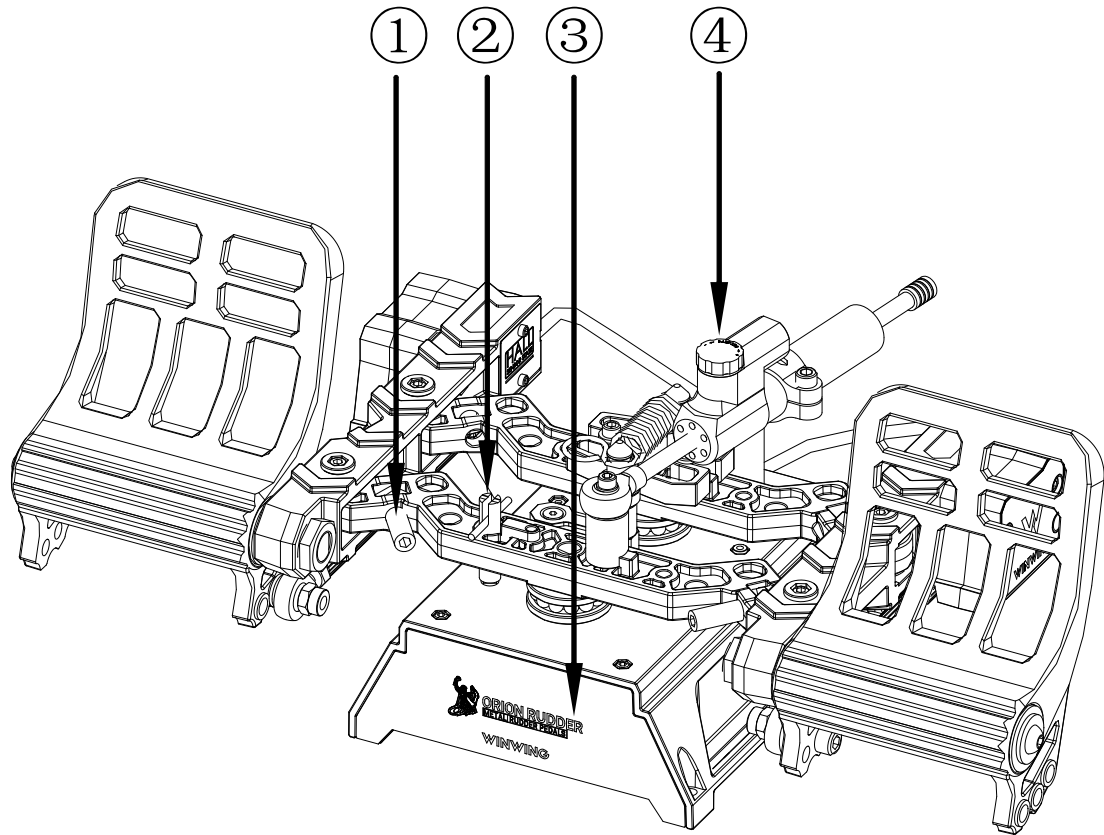
2.3. Damper1 (5#-10#) Mounting



- ① As shown above, place Support Column 1 (5#) onto the protruding platform of the Pedal Assembly (1#). Screw Support Column 2 (6#) onto the screw of the Pedal Assembly and tighten it with an Allen wrench.
- ② As shown above, align the installation hole of the Damper (10#) with the installation axes of Support Columns 1 and 2, and tighten the screws and washers with an Allen wrench.

3. Functions

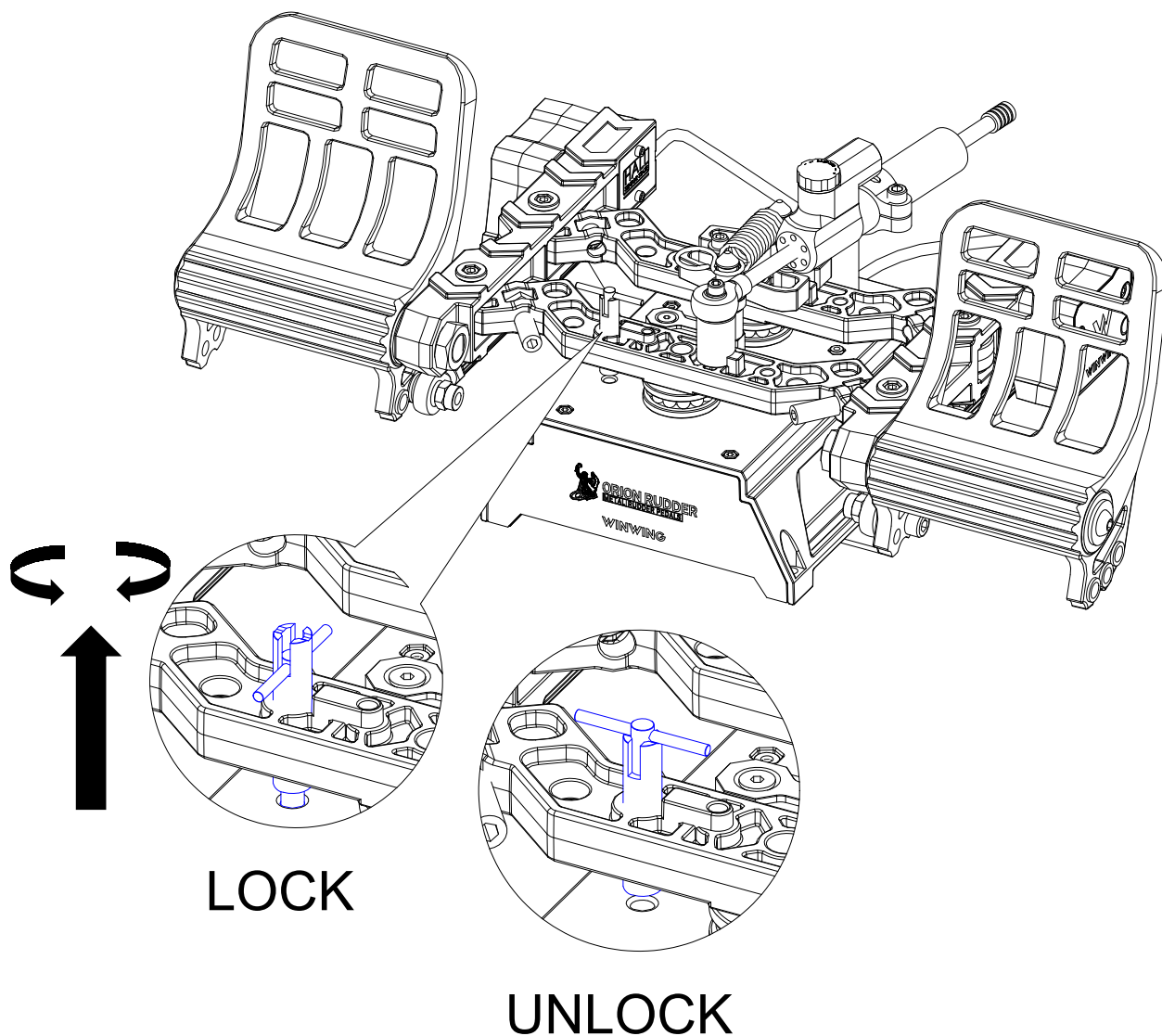
3.1. Buttons and Functions



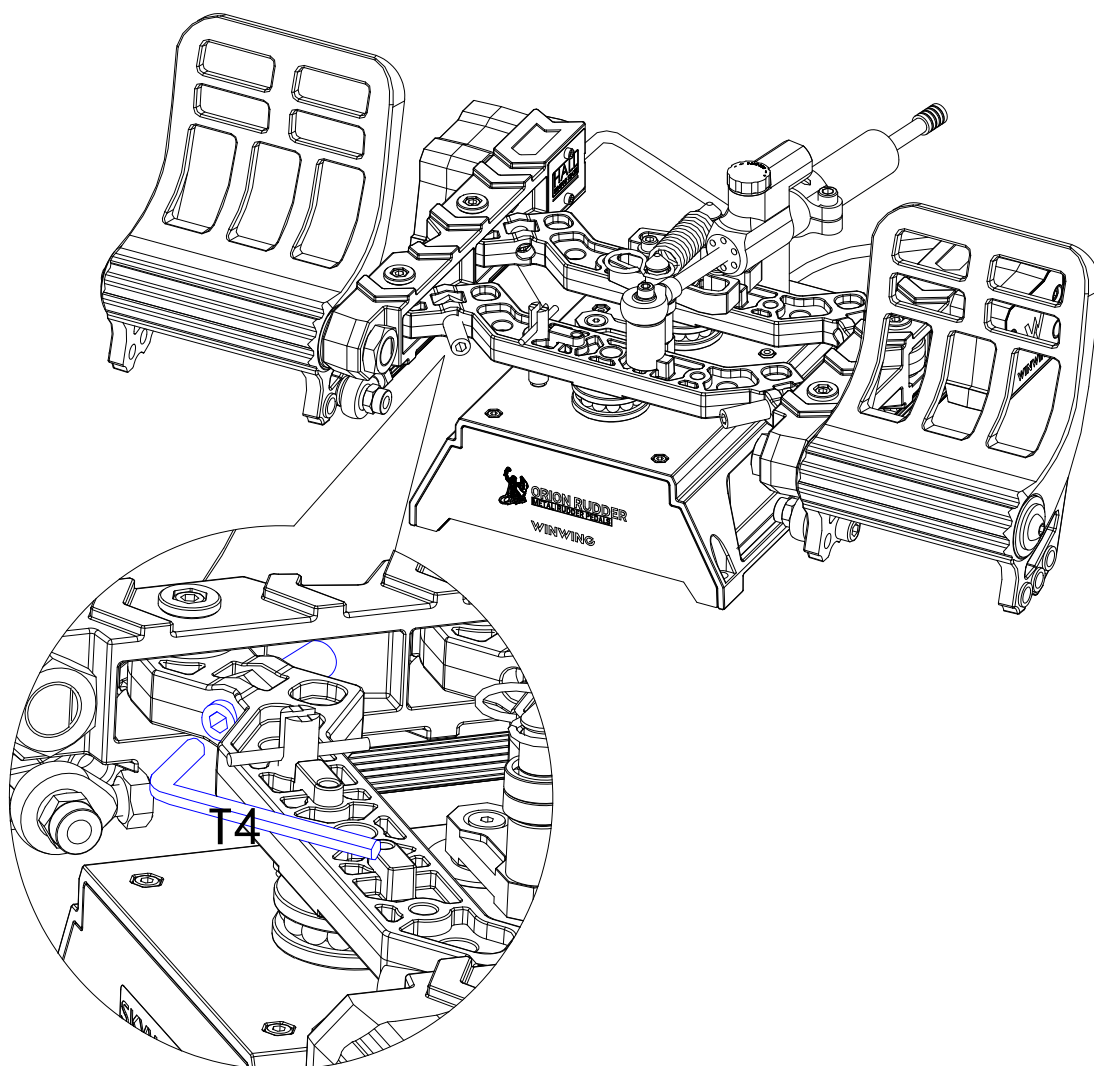
- ① The rubber head screw offers continuous adjustment, allowing for control of the yaw axis travel from 0 to 38° .
- ② T-shaped pull pin is used to quickly lock the yaw axis.
- ③ LED
The Damper (16#) is used to adjust the rebound damping force, reduce the oscillation frequency amplitude, and increase stability.

3.2. Adjustment Methods

T-Shaped Pull Pin Adjustment

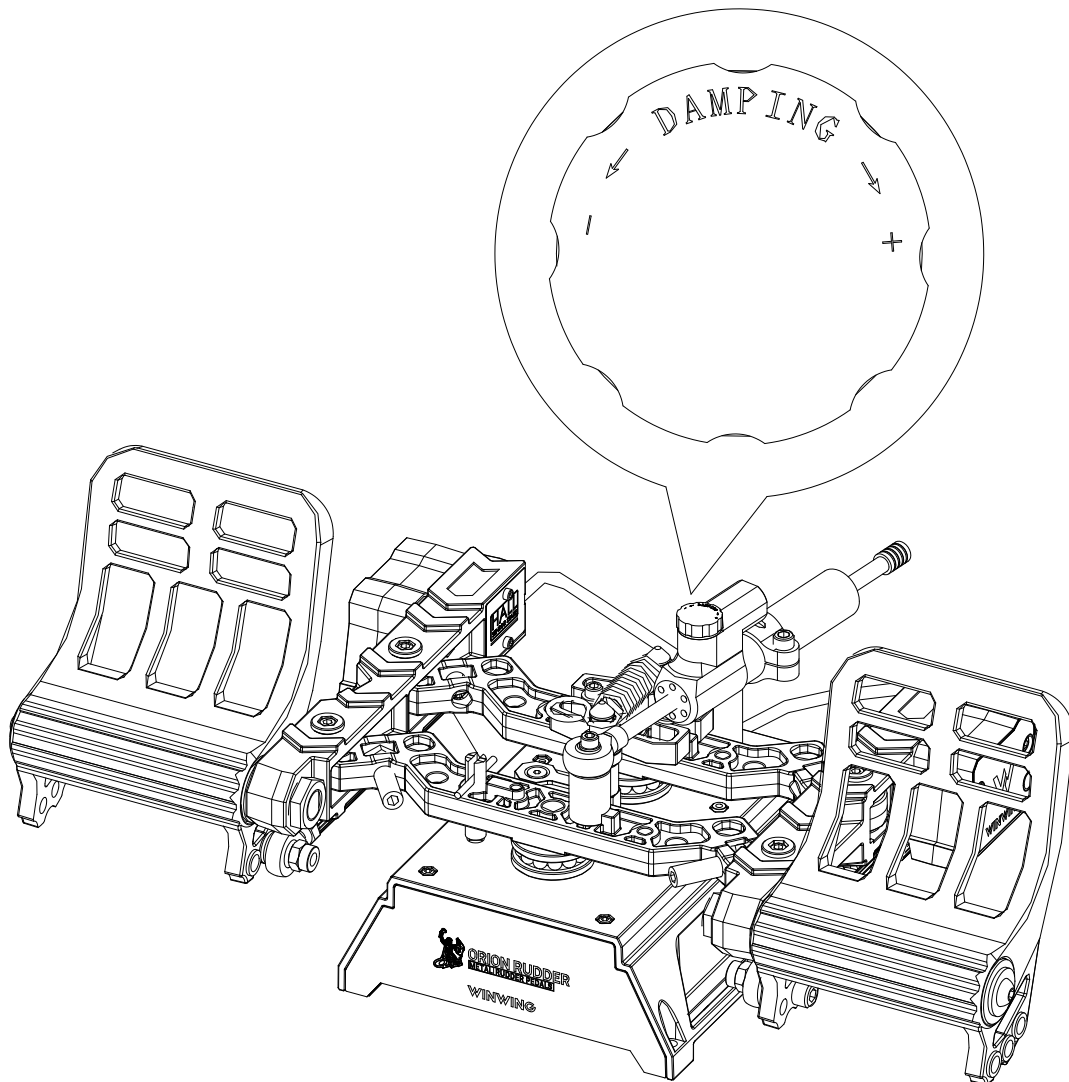


Pull the T-shaped pull pin upward as shown above, then rotate it into the groove.
Rubber Head Screw Adjustment



- ① As shown above, the rubber head screw can be adjusted on one side. Use an Allen wrench: turn counterclockwise to loosen and clockwise to tighten.

3.2.1. Damping Adjustment

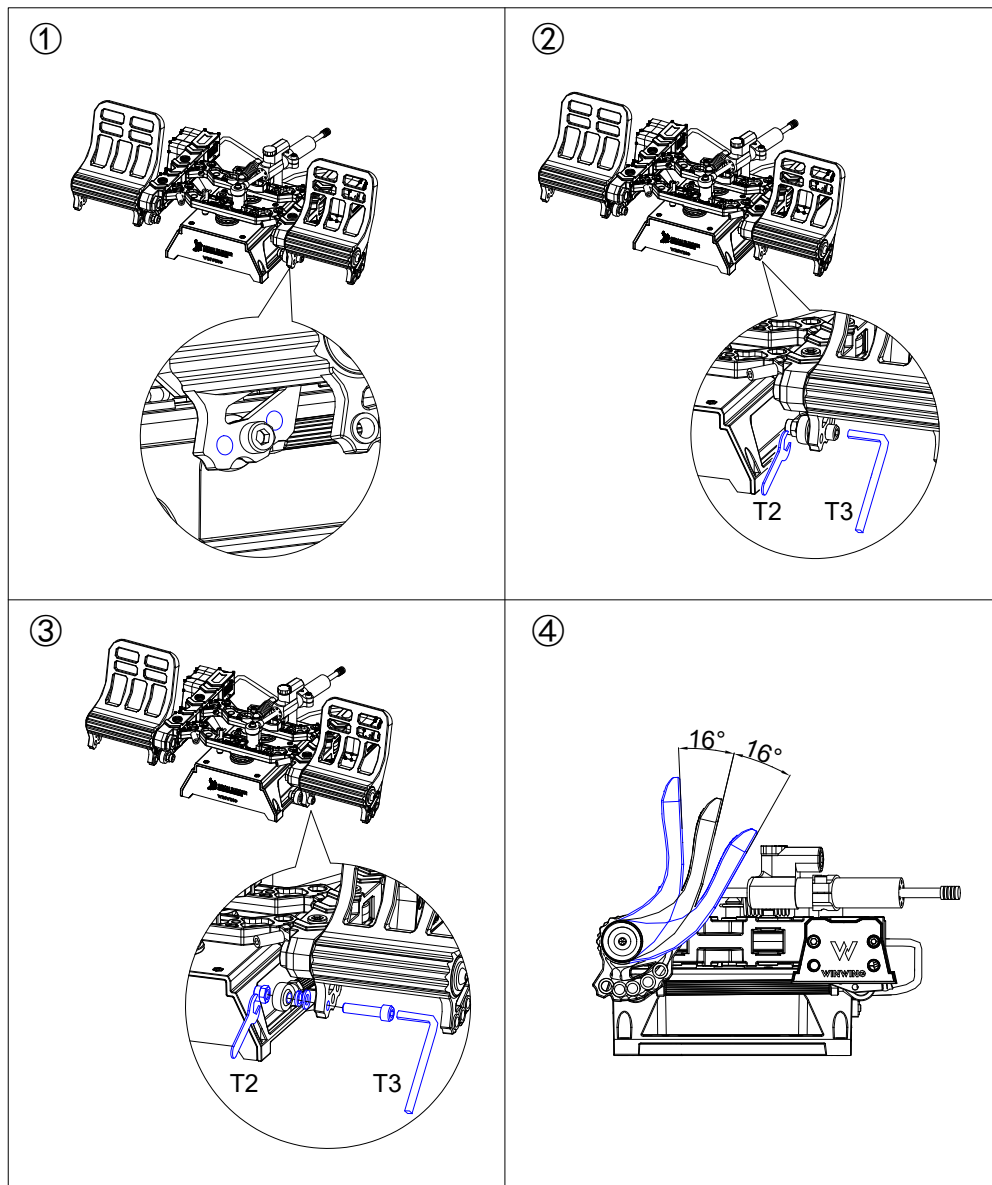


- ① The damping levels are adjustable, with different values for each setting.

Damping Levels	Damper Performance	Note
≤ 20	Optimal Use Range	Recommended
> 20	Potential Issues: Prolonged use may lead to abnormal noises, stuttering, or empty travel.	Not Recommended

- Consumables are not covered by the warranty.

3.2.2. Pedal Adjustment



- ① Each pedal features three adjustable positions.
- ② Use an Allen wrench and an open-end wrench to remove the pre-installed screws, nuts, and other parts from the pedal assembly, as shown above.
- ③ Install the removed parts into the adjustable holes.
- ④ Adjust the angle to the desired position.

Heavy-duty, large-sized metal anti-slip base, with non-slip pads (suitable for wooden, tile, and concrete floors) and reserved profile mounting holes, providing secure and user-friendly experience for desktop players.

*Note: During the transition period, either V1 (Silicone Anti-slip Pad) or V2 (Metal Anti-slip Base) will be shipped randomly due to varying inventories.

*内容如有更新，恕不另行通知。

Contents are subject to updating without notice.

成都翼胜科技有限责任公司

Chengdu Winwings Technology Co., Ltd.

WWW.WINWING.CN

INFO@WINWING.CN

成都市郫都区现代工业港长生桥路 1111 号 19 栋

High-tech International Enterprise Zone No.19 Building, Changshengqiao Road 1111#, Pidu District, Chengdu, Sichuan, China 610000